

---

SAM4s ER-380 Series

# *PC Utility* User's Manual



All specifications are subject to change without notice.

Version 2.0  
©2005, CRS, Inc.

# **CRS, Inc.**

## **Limited Warranty and Disclaimers of Warranty**

This manual has been developed by CRS, Inc. It is intended for the use of its customers and service personnel and should be read in its entirety before attempting to install, use or program the product(s).

Nothing contained in this manual shall be deemed to be, and this manual does not constitute, a warranty of, or representation with respect to, the product or any of the products to which this manual applies. This manual is subject to change without notice and CRS, Inc. has no obligation to provide any updates or corrections to this manual. Further, CRS, Inc. also reserves the right, without prior notice, to make changes in equipment design or components as it deems appropriate. No representation is made that this manual is complete or accurate in all respects and CRS, Inc. shall not be liable for any errors or omissions contained in this manual. In no event shall CRS, Inc. be liable for any incidental or consequential damages relating to or arising out of the use of this manual. This document contains proprietary information that is protected by copyright. All rights are reserved. No part of this document may be photocopied or reproduced without prior written consent of CRS, Inc.

### **NOTICE**

IF ANY WARRANTY IS EXTENDED TO YOU WITH REGARD TO THE PRODUCT(S) TO WHICH THIS MANUAL APPLIES, IT IS A WARRANTY FROM THE ENTITY OR INDIVIDUAL FROM WHOM YOU DIRECTLY PURCHASED THE PRODUCT(S).

SUBJECT TO THE FOREGOING, UNLESS YOU ARE A DIRECT END USER CUSTOMER OF CRS, INC., CRS, INC. DOES NOT EXTEND TO YOU ANY EXPRESS WARRANTY OR ANY IMPLIED WARRANTY AND EXPRESSLY DISCLAIMS ANY IMPLIED WARRANTY OF MERCHANTABILITY, FITNESS FOR USE, OR FITNESS FOR ANY PARTICULAR PURPOSE, OR ANY WARRANTY OF NON-INFRINGEMENT OF INTELLECTUAL PROPERTY RIGHTS IN CONNECTION WITH THE PRODUCT(S) OR ANY SOFTWARE, DRIVERS, OR PROGRAMMING PRODUCT, WHETHER EMBEDDED IN PRODUCT(S) OR PROVIDED AS A SEPARATE PROGRAM, OR USED IN CONJUNCTION WITH THIS/THESE PRODUCT(S). CRS, INC. SPECIFICALLY DOES NOT WARRANT THAT THE OPERATION OF ANY DRIVERS, SOFTWARE, OR PROGRAMMING PRODUCTS LICENSED HEREUNDER, WHETHER EMBEDDED IN PRODUCTS OR PROVIDED AS SEPARATE PROGRAMS, SHALL BE UNINTERRUPTED OR ERROR FREE OR THAT FUNCTIONS CONTAINED IN SUCH DRIVERS, SOFTWARE OR PROGRAMMING PRODUCTS SHALL OPERATE IN COMBINATION(S) WHICH MAY BE SELECTED FOR USE BY YOU OR OTHERWISE MEET YOUR REQUIREMENTS.

CRS, Inc. is not responsible for any damages or loss, either direct, indirect, special, incidental or consequential, which you may experience as a result of your purchase or use of the product(s). Your sole remedy in the event that you encounter any difficulties with the product(s) is against the entity or individual from whom you purchased the product(s).

Revision 2.0 - April 1, 2005

# Contents

<b>Introduction</b>	<b>3</b>
About the ER-380 PC Utility .....	3
<b>Getting Started</b>	<b>5</b>
Setting the ER-380 RS-232C Port.....	5
Preparing the ER-380 for Communications .....	7
Installing the Utility .....	7
Starting the PC Utility.....	8
Store Settings .....	9
<b>Upload/Download Programs</b>	<b>11</b>
UpProgram.....	11
DownProgram .....	12
<b>Edit Programs</b>	<b>13</b>
Procedures.....	13
Program Edit Screens.....	14
<b>Reports</b>	<b>21</b>
Poll Reports.....	21
View Reports.....	22
<b>Prepare &amp; Load Bitmap Logos</b>	<b>25</b>
Preparing a Graphic Logo Bitmap for an ER-380.....	25
Download a Graphic Logo to an ER-380.....	26
Printing the Logo Image – ER-380 Settings.....	27
<b>Appendix</b>	<b>29</b>
Cabling Diagrams.....	29



# Introduction

---

## About the ER-380 PC Utility

The ER-380 Series PC Utility provides basic PC communication functions for Sam4s ER-380. This utility was designed primarily as a dealer tool - to save, edit, and download programs.

---

**Note: The ER-380 Series PC Utility supports only direct onsite connection to the ECR. Modem communications are not supported.**

---

The ER-380 Series PC Utility includes the following features:

- Multiple Stores
- Save and Load ECR programs
- Convert & Download Logo Bitmaps
- Edit ECR programs
- Poll and View Register Reports

---

**Note: The ER-380 Series PC Utility was developed to work best with a screen resolution of at least 1024 x 768 pixels.**

---



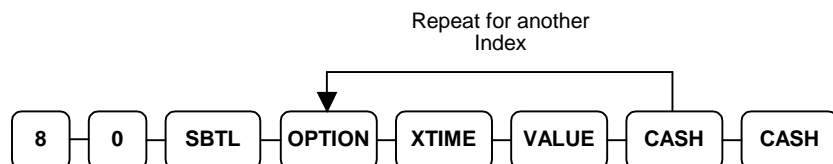
# Getting Started

---

## Setting the ER-380 RS-232C Port

At the ER-380, you must select 'PC' as the device that is attached to the RS-232C communications port.

1. Turn the control lock to the **S** position.
2. Enter **8 0** and press the **SBTL** key.
3. Enter **5** and press the **X/TIME** key. (Refer to the RS-232C option chart that follows.)
4. Enter **1** (the value for PC) and press the **CASH** key.
5. Press **CASH** to exit the program.



## RS-232 Option Chart

Address	Option	Value	Selection
1	Baud Rate	0	9600 BPS
		1	1200 BPS
		2	2400 BPS
		3	4800 BPS
		4	19200 BPS
2	Parity	0	NONE
		1	ODD
		2	EVEN
3	Data Bits	0	8 BITS
		1	7 BITS
4	Stop Bits	0	1 BIT
		1	2 BIT
5	Device Function	0	NONE
		1	PC
		2	SCALE
		4	Remote Printer
		5	Not used
		7	COIN
		9	Pole Display
6	Initial Feeding Line KP	0 - 20	
7	End Feeding Line KP	0 - 20	
8	Initial Feeding Line Slip	0 - 20	
9	Print Line On Guest Check	0 - 50	
10	Scale Type	0	NCI
		1	CAS
11	Printer Type	0	NONE
		1	SAMSUNG SRP-270
		2	SAMSUNG SRP-350
		3	SAMSUNG SRP-500
12	Display Type	0	ICD 2002
		1	



---

## Preparing the ER-380 for Communications

The register must be ready for communications:

- Connect the register directly to the PC with the appropriate cable. See “Cabling Diagrams” on page 29.
- The register power must be on.
- A clerk must be signed on.
- The register cannot be inside of a transaction.
- The key lock can be in any position.

---

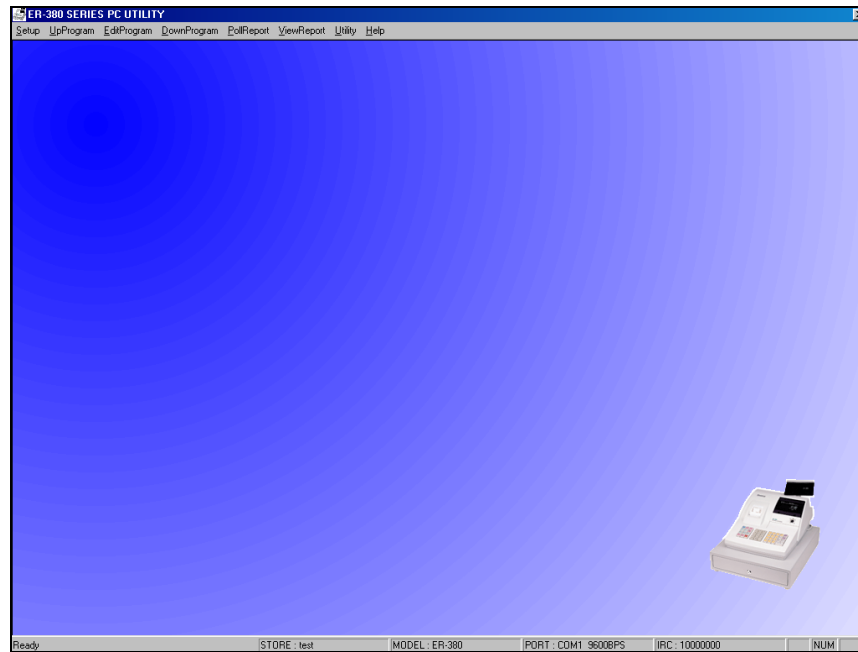
## Installing the Utility

1. From Windows Explorer, locate the file: SETUP380.exe. Double click the file to open the installation dialog box.
2. Follow the instructions on the screen to complete the installation.

---

## Starting the PC Utility

1. Choose **Start, Programs, SHC PC Utility** and then **ER-380 PC Utility**. The Store Setting dialog box displays.
2. Select the store you wish to open and click the **Close** button. The **ER-380 Series PC Utility** window opens. The current store is displayed at the bottom of the window.



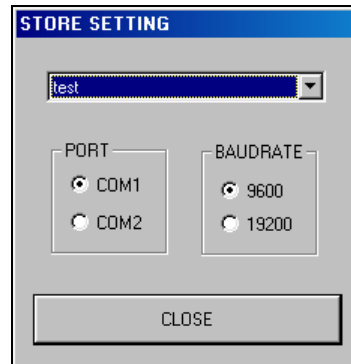
Current Store

---

## Store Settings

There is no limit to the number of stores. When you start the utility for the first time, enter the store name and select the PC port and baud rate.

### *The Store Setting Dialog Box*



### Selecting a Store

- ◆ Select the working store when you start the utility.
- ◆ To change the working store after the utility has been started, choose **Setup Store** from the **Setup** menu and select a different store from the drop-down list box.

### Adding a Store

- ◆ Choose **Add Store** from the **Setup** menu. At the **Add Store** dialog, enter the store name and click **OK**. At the **Store Setting** dialog, select the PC port, baud rate and click the **Close** button.

### Removing a Store

- ◆ Choose **Remove Store** from the **Setup** menu. At the **Remove Store** dialog, select the store name to remove and click **OK**.



# Upload/Download Programs

---

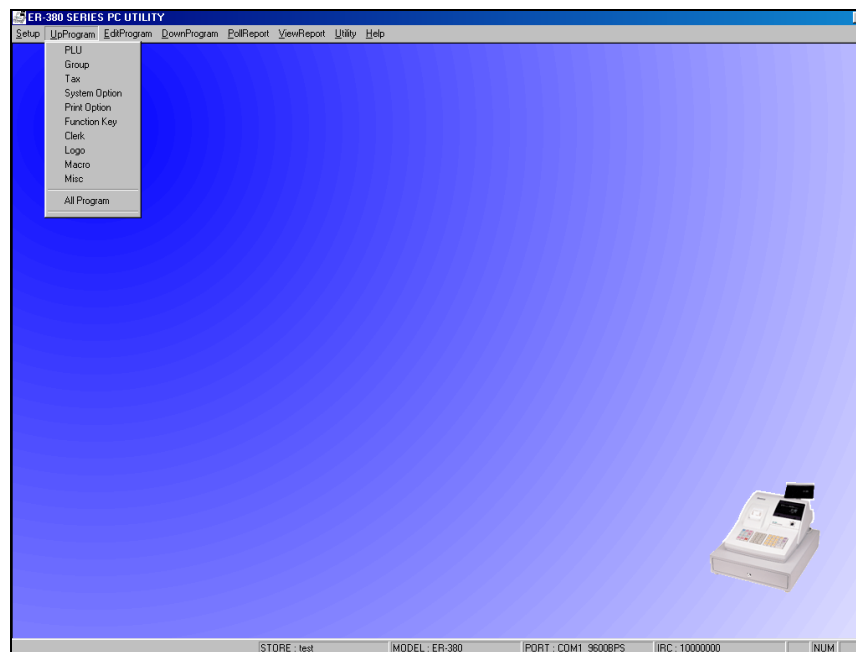
## UpProgram

---

**You must upload a program before program edit functions are allowed.**

---

- ◆ Select the program segment you wish to upload from the **UpProgram** menu, or select **AllProgram** to upload the entire register program

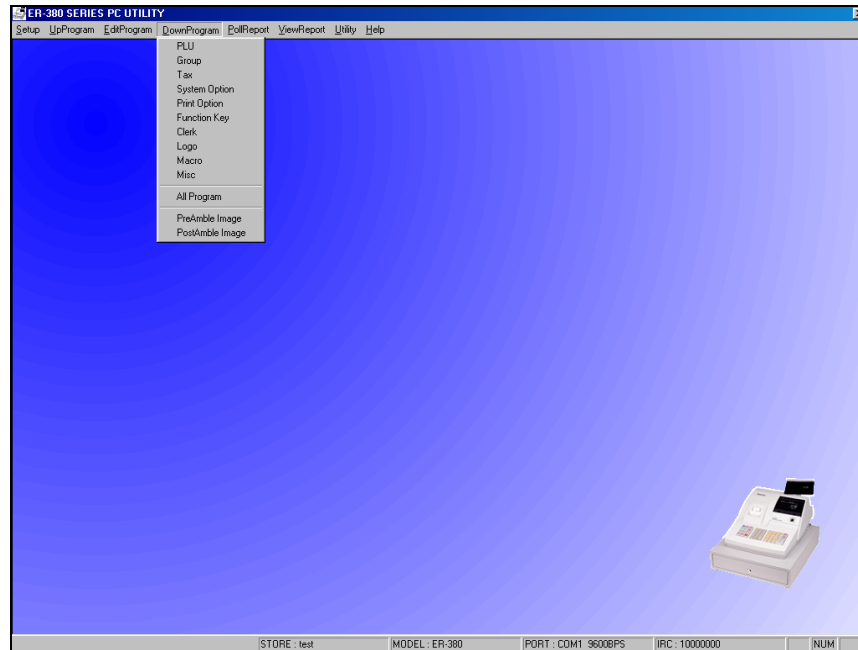


---

# DownProgram

Downloading a program will overwrite the existing register program.

- ◆ Select the program segment you wish to download from the **DownProgram** menu, or select **AllProgram** to download the entire register program (not including PreAmble and PostAmble images, that are downloaded separately.)



# Edit Programs

---

## Procedures

With the exception of memory allocation, all register programs can be edited with the PC Utility. You will find options neatly organized on dialog boxes, making register option programming on the PC Utility more efficient than programming options at the register.

---

▪ **You must upload a program before program edit functions are allowed.**

1. To edit a program, choose the appropriate program from the **EditProgram** menu. An example of each program dialog box is shown in this chapter.
2. After edits, click **Save** to exit and save changes, or click **Cancel** to exit without saving changes.

### Tips

- Each Store's data, including both uploaded program files and polled report files, is located in a separate folder under the ER-380PC folder.
- If you are building a new register program based upon an existing store, you can copy an existing store's program files to a new store folder. It is often more efficient to modify an existing program than to start over with a new one.
- If you are building a large PLU file with identical (or similar) options for each PLU, you may find the from/to PLU programming at the register useful. For example, you can first program the identical options for a range of PLUs at the register. Then upload the PLU program with the utility. Use the utility to program descriptors, prices and make adjustments to each PLU individually. Finally, you can download the completed program to the register.
- If you have questions regarding the meaning of ECR features, refer the appropriate *ER-380 Program and Operation* manual for an explanation of your program options.





## Tax

**Tax**

TAX1

ADD ON  TAX TABLE  VAT

RATE 6.500

GST TAXTABLE

TAX 1  TAX 2  TAX 3

SAVE CANCEL

## System Option

**SystemOption**

Beeper Active  Real Clerk Key

Decimal Place 2 Global Entry Limit (0-14) 0

Clerk Entry Push Date Format MDY  Direct mult More than one digit

Clerk is Stay down % And Tax cal. Round up at 0.5C  Display add price of linked items

Drawer need to be shut to operate  Split Price Calculation Round up at 0.5C  Allow sale with 0 stock

Activate Drawer open alarm  Comp. Eat-In T-Out D-Thru before Tender  Allow SWEDISH round on SUBT

Seconds to allow Drawer open (1-99) 30 Hash is Non-Add  Allow SWEDISH round on CASH

Allow Post Tender  Reset Z counter After Z1 report  Allow Z stock report

Open Drawer on Post Tender  Finan. Rpt.  Time Rpt.  Electronic journal enable

Allow Multiple Receipts  PLU Rpt.  Clerk Rpt.  Prompt operator when EJ buff is full

Cash Declaration Required  Group Rpt.  Stop operations when EJ buff is full

Reset Transaction No. on Z report  Reset Z counter After Z2 report  Send only negative entries to EJ

Negative Balance in X mode  Daily Sales Report  Send reset report to EJ

Zero Balance in X mode  Disable Cash Declaration  Use SPOOL

Reset Grand Total after Z report  Printer Paper Sensor Active

Open Drawer When reports run  Deactivate Split Pricing

Open Drawer during train Mode  Allow Direct Multiplication

SAVE CANCEL

# Print Option

**PRINT OPTION**

<input type="checkbox"/> Print Media Totals on Clerk Report	<input type="checkbox"/> Print Subtotal Without Tax	<input checked="" type="checkbox"/> Print Date
<input checked="" type="checkbox"/> Print Tax Symbol	Tax Amount Is <input type="text" value="ITEMIZE"/>	<input checked="" type="checkbox"/> Print Time
<input checked="" type="checkbox"/> Print VD Mode and Return on Rpt.	<input checked="" type="checkbox"/> Print Tax Amount	<input checked="" type="checkbox"/> Print Machine No.
<input type="checkbox"/> Print Audaction on Report	<input type="checkbox"/> Print Taxable total	<input checked="" type="checkbox"/> Print Clerk Name
<input type="checkbox"/> Print Plu report before Financial Report	<input type="checkbox"/> Print Tax % Rate	<input checked="" type="checkbox"/> Print Z Counter
<input checked="" type="checkbox"/> Skip Zero Totals on Financial Rpt.	<input type="checkbox"/> VAT Breakdown	<input checked="" type="checkbox"/> AVG Item / Cust
<input checked="" type="checkbox"/> Skip Zero Totals on Clerk Report	<input type="checkbox"/> Print Train mode title in Training Mode	<input checked="" type="checkbox"/> AVG \$ / Cust
<input type="checkbox"/> Print Clerk Report After Finan. Rpt.	Currency Symbol	<input type="checkbox"/> Buffer Receipt when receipt
<input type="checkbox"/> Print Sale Item No.	Conv # 1 <input type="text" value=""/>	<input type="checkbox"/> Priority Print by Group on KP
<input type="checkbox"/> Print Plu sale item number	Conv # 2 <input type="text" value=""/>	<input type="checkbox"/> Print PLU # on Receipt
<input type="checkbox"/> Print PLU with Zero Totals on Rpt.	Conv # 3 <input type="text" value=""/>	<input type="checkbox"/> Not Print when Polling Reports
<input type="checkbox"/> Print Subtotal when pressed	Conv # 4 <input type="text" value=""/>	<input type="checkbox"/> Print PLU # on PLU Reports
<input type="checkbox"/> Print % of sales on PLU Report	<input checked="" type="checkbox"/> Print KP Order # on Receipt	<input type="checkbox"/> Send Order to KP at Subtotal
<input checked="" type="checkbox"/> Print Consecutive No.	<input type="checkbox"/> Print Price on KP	<input type="checkbox"/> on Receipt
Home Currency Symbol <input type="text" value="\$"/>	<input checked="" type="checkbox"/> Send to KP in VOID MODE	<input checked="" type="checkbox"/> Prn Preamble Graphic Logo
	<input type="checkbox"/> Send to KP in TRAIN MODE	<input checked="" type="checkbox"/> Prn Postamble Graphic Logo
Grand Total Is <input type="text" value="GROSS"/>	<input checked="" type="checkbox"/> Combine like Items on KP	Pre Graphic Logo <input type="text" value="USER"/>
Print Grand total	<input checked="" type="checkbox"/> Print Receipt when Sign On/Off	Post Graphic Logo <input type="text" value="USER"/>
<input checked="" type="checkbox"/> On X Report <input checked="" type="checkbox"/> On Z Report	Volume Unit <input type="text" value="GAL"/>	Edit Pre Feeding Line (0-9) <input type="text" value="0"/>
Print Gross total	<input checked="" type="checkbox"/> Print Preamble Message on Receipt	Edit End Feeding Line (0-9) <input type="text" value="0"/>
<input checked="" type="checkbox"/> On X Report <input checked="" type="checkbox"/> On Z Report	<input checked="" type="checkbox"/> Print Postamble Message on Receipt	

# Function Key

**FuncKey**

Function Key

- NOSALE
- % 1
- % 2
- % 3
- % 4
- % 5
- ADDCHK
- CANCEL
- CASH
- CHARGE1
- CHARGE2
- CHARGE3
- CHARGE4
- CHARGE5
- CHARGE6
- CHARGE7
- CHARGE8
- CHARGE#
- CHKCASH
- CHECK
- CONV1
- CONV2
- CONV3
- CONV4
- DVTHR
- EATIN
- ERRCORR
- F/S SUB
- F/S TEND

**NOSALE**

DESCRIPTOR 1

DESCRIPTOR 2

KEY DISABLE       UNDER MGR CONTRC

INHIBIT NO SALE AFTER NON-ADD #

ENFORCE# ENTRY AT START OF SALE

PRINT ON N/S

NON-ADD# PROHIBIT

COMP. NON-ADD # MUST MATCH MAX DIGIT

MAX DIGIT ( 0 - 8 )

## Clerk

**CLERK**

#	DESCRIPTOR
1	CLERK 1
2	CLERK 2
3	CLERK 3
4	CLERK 4
5	CLERK 5
6	CLERK 6
7	CLERK 7
8	CLERK 8
9	CLERK 9
10	CLERK 10

CLERK 1

DESCRIPTOR

CLERK CODE

## Logo/Descriptors

**LogoDesc**

PREAMBLE		ENDORSEMENT MESG	
1	<input type="text"/>		<input type="text"/>
2	<input type="text"/>		<input type="text"/>
3	<input type="text"/>		<input type="text"/>
4	<input type="text"/>		<input type="text"/>
6	<input type="text"/>		<input type="text"/>
7	<input type="text"/>		<input type="text"/>

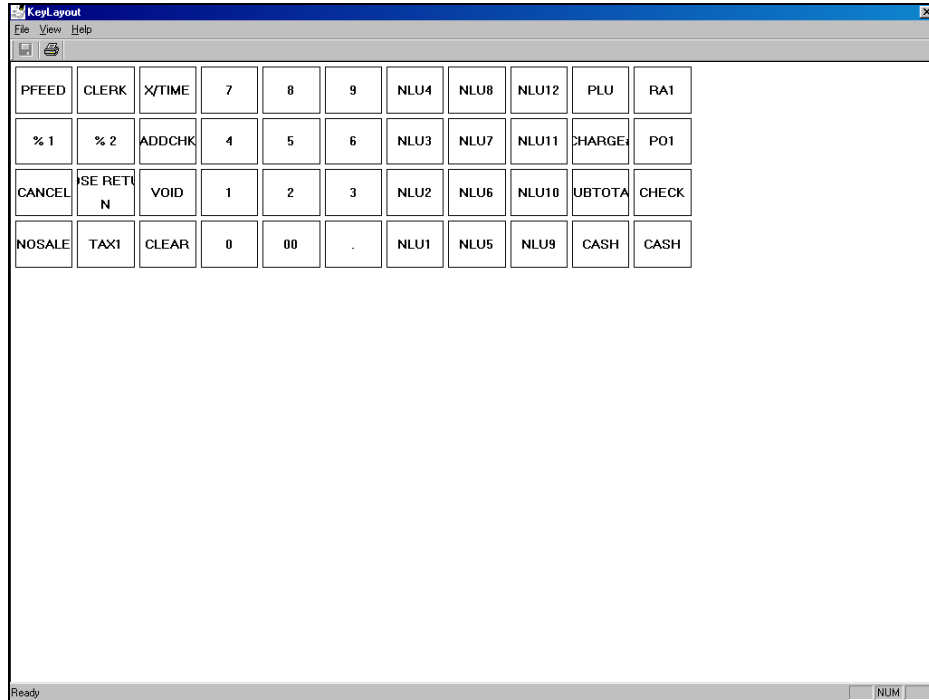
  

POSTAMBLE	
1	<input type="text"/>
2	<input type="text"/>
3	<input type="text"/>
5	<input type="text"/>
6	<input type="text"/>
7	<input type="text"/>

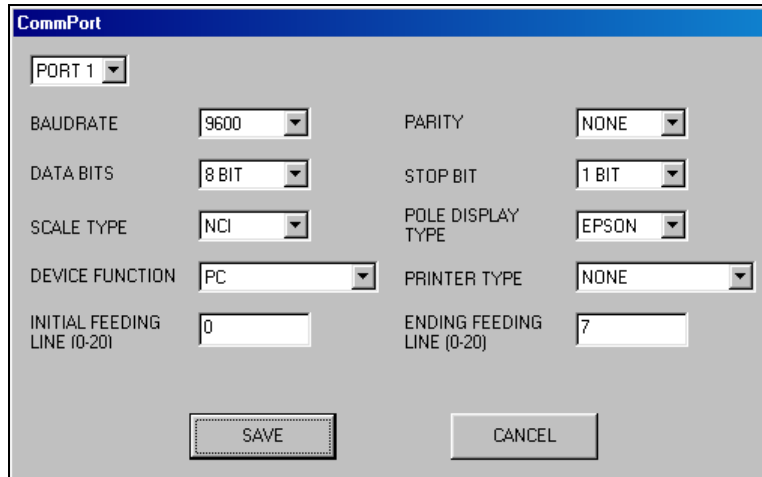


## Key Layout

**Note: To see the entire keyboard on the screen, the screen resolution must be set to 1024 x 768 pixels.**



## Comm Port



# Etc. – Tare/Drawer Limit/Change Limit/Machine Number

The 'Etc' window contains the following fields and values:

Field	Value
TARE WEIGHT (0.100)	0.100
TARE WEIGHT (0.200)	0.200
TARE WEIGHT (0.300)	0.300
TARE WEIGHT (0.400)	0.400
TARE WEIGHT (0.500)	0.500
DRAWER LIMIT	0.00
CHECK CHANGE LIMIT	0.00
MACHINE NUMBER	12345
TRAINING MODE PASSWORD	0

Buttons: SAVE, CANCEL

# Scan Data

The 'SELECT PROGRAM' window contains the following buttons:

PLU	GROUP
TAX	SYSTEM OPTION
PRINT OPTION	FUNCTION KEY
CLERK	LOGO & DESCRIPTOR
MACRO	NLU
ETC(TARE...)	PORT

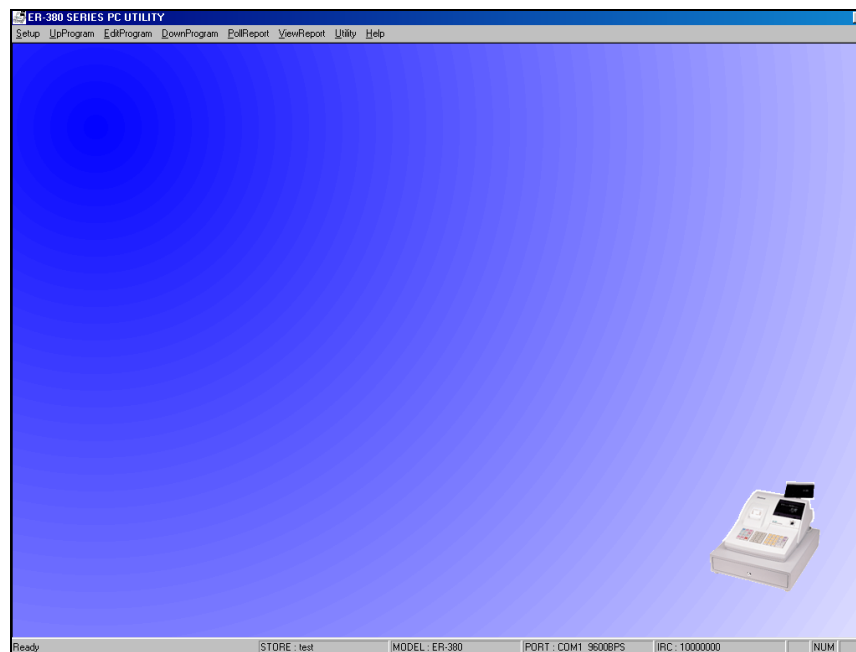
Button: CANCEL

# Reports

---

## Poll Reports

- ◆ Select the report you wish to poll from the **PollReport** menu, or select **AllReport** to upload all reports.



---

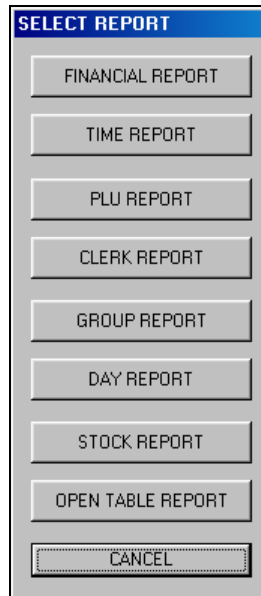
## View Reports

---

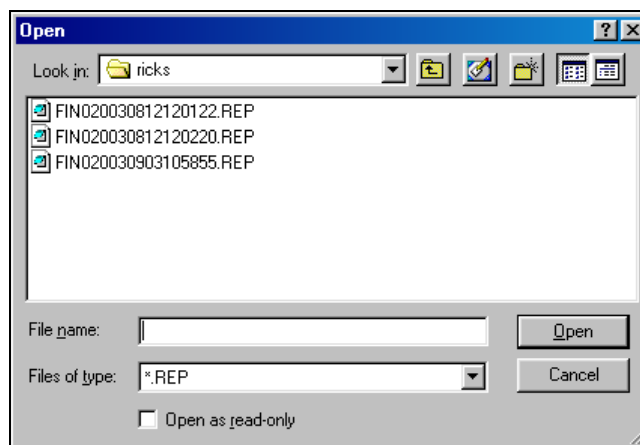
**Note: Polled report can only be viewed with the built-in viewer. Report files are not ASCII format, nor can they be converted to ASCII format with this utility**

---

1. Select the Individual Report from the ViewReport menu.



2. Click the button that represents the report you wish to view.





3. Select the report you wish to view and click **Open**.

Click to display the report without totals that have zero values

Click to view the next page of the report.

DESCRIPTION	COUNT	TOTAL
+PLU TTL	80.00	300.78
-PLU TTL	0.00	0.00
ADJUST TTL	80.00	300.78
NONTAX	2	8.38
TAX1 SALES	0	289.45
TAX2 SALES	0	289.45
TAX3 SALES	0	286.45
TAX4 SALES	0	292.40
TAX1	0	18.74
TAX2	0	17.50
TAX3	0	17.32
TAX4	0	17.68
XMP11 SALES	0	0.00
XMP12 SALES	0	0.00
XMP13 SALES	0	0.00
XMP14 SALES	0	0.00
EATIN TTL	0	0.00
TAKEOUT TTL	0	0.00
DRTHRU TTL	0	0.00
% 1	0	0.00
% 2	0	0.00
% 3	0	0.00
% 4	0	0.00
% 5	0	0.00
NET SALE	50	372.02
CREDIT TAX1	0	0.00
CREDIT TAX2	0	0.00
CREDIT TAX3	0	0.00
CREDIT TAX4	0	0.00
FD/S CREDIT	0	0.00

4. Use the scroll bar or the arrow buttons to view the report



# Prepare & Load Bitmap Logos

---

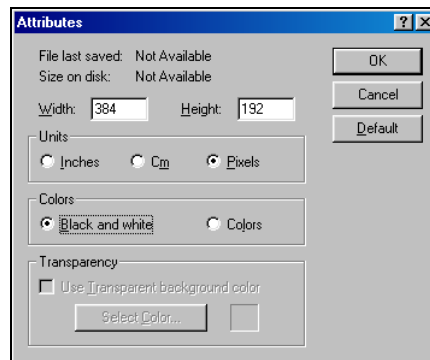
## Preparing a Graphic Logo Bitmap for an ER-380

---

The image must be black/white, 384 x 192 pixels, and 10 Kbytes or less in size.

---

1. Open MS Paint.
2. Open the image file you wish to use.
3. Choose **Attributes** from the **Image** menu. The **Attributes** dialog box displays.



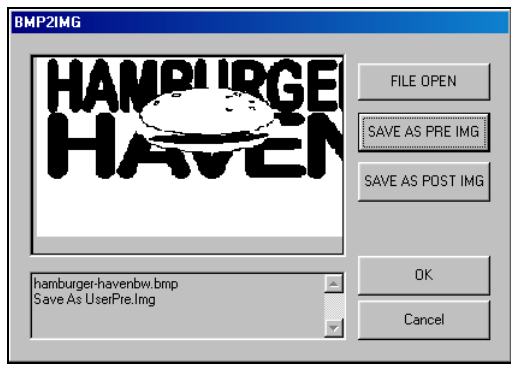
4. The image dimensions must be no larger than 384 pixels wide by 192 pixels high. If the image size in pixels is greater than the maximum, you must resize your image.
  - a. Click **OK** to exit the Attributes dialog.
  - b. Select your image. (Choose **Select All** from the **Edit** menu.)
  - c. Using the handles of the selected image, resize the image. Keep the image in the upper left corner of the screen.
  - d. Choose **Attributes** from the **Image** menu. The **Attributes** dialog box displays again. Enter 384 in the **Width** field; enter 192 in the **Height** field; select **Pixels** as the unit. Click **OK** to exit the dialog box.

- e. Your image will be cropped to the 384 x 192 pixel size. If you cropped part of the image you wish to keep, you can undo (Ctrl + Z) and try again. You may have to experiment a bit to resize the image inside the 384 x 192 pixel limit.
5. After the image is sized, select **Black and white** in the **Attributes** dialog.
6. Save your image as type “Monochrome Bitmap (\*.bmp,\*.dib)” and confirm that the size is 10k or less.

---

## Download a Graphic Logo to an ER-380

1. Install the *ER-380 PC Utility* on your PC.
2. At the ER-380, set the RS-232C option address #5 to a value of 1 (PC).  
(S position; 80 SBTL; 5 X/TIME; 1 CASH; CASH)
3. Return key lock to **REG** and sign on a clerk.
4. Connect the PC to the ER-380 using one of the following cables:  
CRS Part # 522035 (Register DB-9M to PC DB-9F)  
CRS Part # 522038 (Register DB-9M to PC DB-25F)
5. At your PC, start the ER-380 PC Utility. (Select **Start, Programs, SHC PC UTILITY, ER-380 PC UTILITY.**) The **Store Setting** dialog box displays.
6. If you are starting the ER-380 PC Utility for the first time, you must define a store name, or if a store is already defined, you can select the store from the drop down list. After the store is defined or selected, click **Close**. The PC Utility program starts.
7. Move the .bmp logos you wish to use into the store directory (i.e. C:/ER-380PC/storename.)
8. At the PC Utility, choose **Convert Logo Image** from the **Utility** menu. The Bmp dialog box displays.
9. Click **FILE OPEN**. Select the bitmap image you wish to use from the **Open** dialog and click the **Open** command button.
10. Click the **SAVE AS PRE IMG** or **SAVE AS POST IMG** button.



11. When the image is selected, click **OK**. Verify that the message “Save As UserPre.Img” or “Save As UserPost.Img” displays. If the file is too large, and cannot be loaded, the message “File Size Error” display.
12. Choose **PreAmble Image** or **PostAmble Image** from the **DownProgram** menu.
13. The screen will track the progress of the download. When complete, the **COMM COMPLETED** message will display, click **OK**.

---

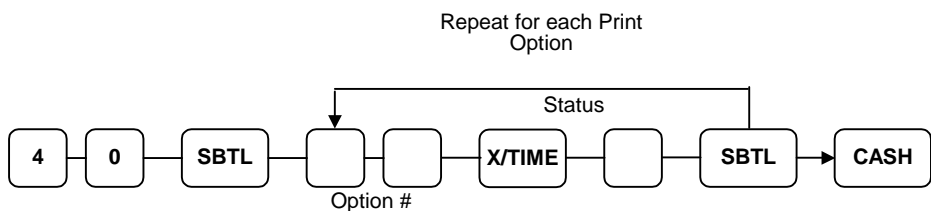
## Printing the Logo Image – ER-380 Settings

Two addresses in Print Option Programming affect graphic logo printing:

**Option #28** – Add the value of 1 to address 28 if you wish to print the pre graphic logo on the receipt. Add the value of 2 to address 28 if you wish to print the post graphic logo on the receipt.

**Option #30** – Add the value of 1 to address 30 if you wish to print your custom bitmap instead of the default bitmap “Thank You – Your Receipt”. Add the value of 2 to address 30 if you wish to print your custom bitmap instead of the default bitmap “Call Again”.

### Print Option Flowchart (P Key Lock Position)





# Appendix

## Cabling Diagrams

You can configure cables yourself with the diagram provided here, or you can order the appropriate cables from CRS Parts at 1-800-333-4949.

### Direct Connection

#### Part # 522035

Sam4s DB-9M	PC DB-9F
DCD1	1DCD
RXD2	2RXD
TXD3	3TXD
DTR4	4DTR
GND5	5GND
DSR6	6DSR
RTS7	7RTS
CTS8	8CTS
VCC9	9RI

#### Part # 522038

Sam4s DB-9M	PC DB-25F
DCD1	1ChGND
RXD2	2TXD
TXD3	3RXD
DTR4	4RTS
GND5	5CTS
DSR6	6DSR
RTS7	7GND
CTS8	8DCD
VCC9	20DTR

