
SAM4s ER-280 Series

PC Utility User's Manual



All specifications are subject to change without notice.

Preliminary Version

©2007, CRS, Inc.

CRS, Inc.

Limited Warranty and Disclaimers of Warranty

This manual has been developed by CRS, Inc. It is intended for the use of its customers and service personnel and should be read in its entirety before attempting to install, use or program the product(s).

Nothing contained in this manual shall be deemed to be, and this manual does not constitute, a warranty of, or representation with respect to, the product or any of the products to which this manual applies. This manual is subject to change without notice and CRS, Inc. has no obligation to provide any updates or corrections to this manual. Further, CRS, Inc. also reserves the right, without prior notice, to make changes in equipment design or components as it deems appropriate. No representation is made that this manual is complete or accurate in all respects and CRS, Inc. shall not be liable for any errors or omissions contained in this manual. In no event shall CRS, Inc. be liable for any incidental or consequential damages relating to or arising out of the use of this manual. This document contains proprietary information that is protected by copyright. All rights are reserved. No part of this document may be photocopied or reproduced without prior written consent of CRS, Inc.

NOTICE

IF ANY WARRANTY IS EXTENDED TO YOU WITH REGARD TO THE PRODUCT(S) TO WHICH THIS MANUAL APPLIES, IT IS A WARRANTY FROM THE ENTITY OR INDIVIDUAL FROM WHOM YOU DIRECTLY PURCHASED THE PRODUCT(S).

SUBJECT TO THE FOREGOING, UNLESS YOU ARE A DIRECT END USER CUSTOMER OF CRS, INC., CRS, INC. DOES NOT EXTEND TO YOU ANY EXPRESS WARRANTY OR ANY IMPLIED WARRANTY AND EXPRESSLY DISCLAIMS ANY IMPLIED WARRANTY OF MERCHANTABILITY, FITNESS FOR USE, OR FITNESS FOR ANY PARTICULAR PURPOSE, OR ANY WARRANTY OF NON-INFRINGEMENT OF INTELLECTUAL PROPERTY RIGHTS IN CONNECTION WITH THE PRODUCT(S) OR ANY SOFTWARE, DRIVERS, OR PROGRAMMING PRODUCT, WHETHER EMBEDDED IN PRODUCT(S) OR PROVIDED AS A SEPARATE PROGRAM, OR USED IN CONJUNCTION WITH THIS/THESE PRODUCT(S). CRS, INC. SPECIFICALLY DOES NOT WARRANT THAT THE OPERATION OF ANY DRIVERS, SOFTWARE, OR PROGRAMMING PRODUCTS LICENSED HEREUNDER, WHETHER EMBEDDED IN PRODUCTS OR PROVIDED AS SEPARATE PROGRAMS, SHALL BE UNINTERRUPTED OR ERROR FREE OR THAT FUNCTIONS CONTAINED IN SUCH DRIVERS, SOFTWARE OR PROGRAMMING PRODUCTS SHALL OPERATE IN COMBINATION(S) WHICH MAY BE SELECTED FOR USE BY YOU OR OTHERWISE MEET YOUR REQUIREMENTS.

CRS, Inc. is not responsible for any damages or loss, either direct, indirect, special, incidental or consequential, which you may experience as a result of your purchase or use of the product(s). Your sole remedy in the event that you encounter any difficulties with the product(s) is against the entity or individual from whom you purchased the product(s).

Revision 2.0 - April 1, 2005

Contents

Introduction	3
About the ER-280 Series PC Utility	3
Getting Started	5
Setting the ER-285M RS-232C Port	5
Preparing the ER-280 Utility for Communications	8
Installing the Utility	8
Starting the PC Utility	9
Store Settings	10
Upload/Download Programs	11
UpProgram	11
DownProgram	12
Edit Programs	13
Procedures	13
Program Edit Screens	14
Reports	23
Poll Reports	23
View Reports	25
Prepare & Load Bitmap Logos	29
Preparing a Graphic Logo Bitmap for an ER-285M	29
Download a Graphic Logo to an ER-285M.....	30
Printing the Logo Image – ER-285M Settings	31
Appendix	33
Cabling Diagrams	33

Introduction

About the ER-280 Series PC Utility

The ER-280 Series PC Utility provides basic PC communication functions for SAM4s ER-285M. This utility was designed primarily as a dealer tool - to save, edit, and download programs.

The ER-280 Series PC Utility includes the following features:

- Multiple Stores
- Save and Load ECR programs
- Convert & Download Logo Bitmaps
- Edit ECR programs
- Poll and View Register Reports
- Remote Modem Communication Capability

Note: The ER-280 Series PC Utility was developed to work best with a screen resolution of at least 1024 x 768 pixels.

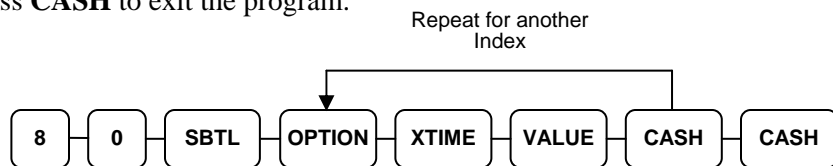
Getting Started

Setting the ER-285M RS-232C Port

At the ER-285M, you must select 'PC' as the device that is attached to one of the RS-232C communications port.

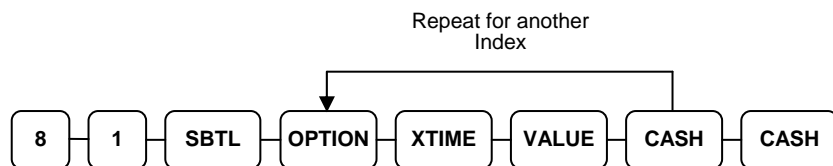
If you are using RS-232C Port #1:

1. Turn the control lock to the **S** position.
2. Enter **8 0** and press the **SBTL** key.
3. Enter **5** and press the **X/TIME** key. (Refer to the RS-232C option chart that follows.)
4. Enter **1** (the value for PC) and press the **CASH** key.
5. Press **CASH** to exit the program.



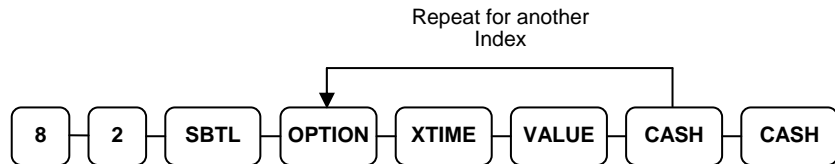
If you are using RS-232C Port #2:

1. Turn the control lock to the **S** position.
2. Enter **8 1** and press the **SBTL** key.
3. Enter **5** and press the **X/TIME** key. (Refer to the RS-232C option chart that follows.)
4. Enter **1** (the value for PC) and press the **CASH** key.
5. Press **CASH** to exit the program.



If you are using RS-232C Port #3:

1. Turn the control lock to the **S** position.
2. Enter **8 2** and press the **SBTL** key.
3. Enter **5** and press the **X/TIME** key. (Refer to the RS-232C option chart that follows.)
4. Enter **1** (the value for PC) and press the **CASH** key.
5. Press **CASH** to exit the program.



RS-232 Option Chart

N1	OPTION	N2	VALUE
1	Baud Rate	0	9600 BPS
		1	1200 BPS
		2	2400 BPS
		3	4800 BPS
		4	19200 BPS
2	Parity	0	NONE
		1	ODD
		2	EVEN
3	Data Bits	0	8 BITS
		1	7 BITS
4	Stop Bits	0	1 BIT
		1	2 BIT
5	Device Function	0	NONE
		1	PC
		2	SCALE
		4	RECEIPT PRINTER
		6	SCANNER
		7	COIN
		8	EFT
		9	POLE
10	PDC		
6	Initial Feeding Line KP	0 - 20	
7	End Feeding Line KP	0 - 20	
8	Initial Feeding Line Slip	0 - 20	
9	Print Line On Guest Check	0 - 50	
10	Scale Type	0	NCI
		1	CAS
11	Printer Type	0	NONE
		1	SAM4S ELLIX10
		2	SAM4S ELLIX20
		3	SRP-270
		4	SRP-350
		5	CITIZEN3550
		6	CITIZEN810
		7	CITIZEN230
		8	EPSON TMT88-2
		9	EPSON U200
		10	EPSON U295
		11	EPSON U300
		12	EPSON U325
		13	EPSON U375
		14	STAR SP-200
		15	STAR SP-298
		16	STAR SP-300
17	STAR TSP-200		
12	Pole Display	0	EPSON
		1	ICD

Preparing the ER-280 Utility for Communications

The register must be ready for communications:

- Connect the register directly to the PC with the appropriate cable. See “Cabling Diagrams” on page 33.
- The register power must be on.
- A clerk must be signed on.
- The register cannot be inside of a transaction.
- The key lock can be in any position.

Installing the Utility

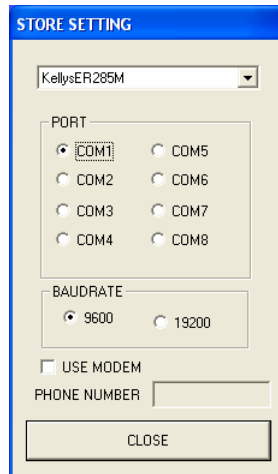
1. From Windows Explorer, locate the file: SETUP280.exe. Double click the file to open the installation dialog box.
2. Follow the instructions on the screen to complete the installation.

Starting the PC Utility

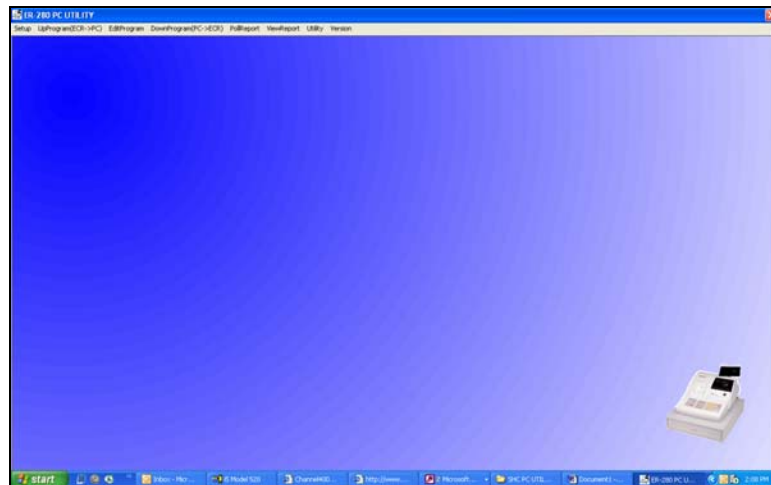
1. Choose **Start, Programs, SHC PC UTILITY** and then **280pc**. When starting the utility for the first time, the ADD STORE dialog box displays.



2. Enter the store name and click **OK**. The STORE SETTING dialog displays. *If you have already set up at least one store, the STORE SETTING dialog box display upon start-up.*



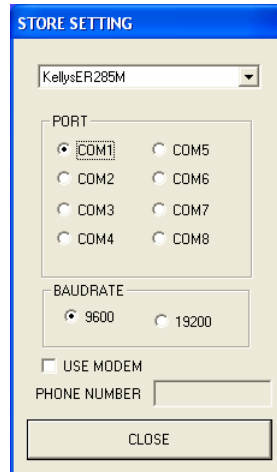
3. Select the store you wish to open, select the PORT (COM1-COM8), select the BAUDRATE (9600 or 19200) and click the **Close** button. The **ER-280 Series PC Utility** window opens for the selected store.



Store Settings

There is no limit to the number of stores. When you start the utility for the first time, enter the store name and select the PC port and baud rate.

The Store Setting Dialog Box



Selecting a Store

- ◆ Select the working store when you start the utility.
- ◆ To change the working store after the utility has been started, choose **Setup Store** from the **Setup** menu and select a different store from the drop-down list box.

Adding a Store

- ◆ Choose **Add Store** from the **Setup** menu. At the **Add Store** dialog, enter the store name and click **OK**. At the **Store Setting** dialog, select the PC port, baud rate and click the **Close** button.

Removing a Store

- ◆ Choose **Remove Store** from the **Setup** menu. At the **Remove Store** dialog, select the store name to remove and click **OK**.

Using a Modem

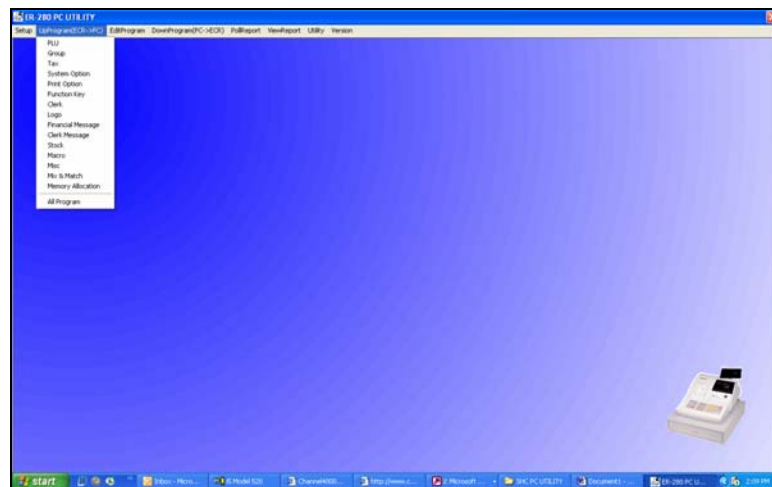
- ◆ Choose **Use Modem** check box and enter the phone number of the store in the **Phone Number** field.

Upload/Download Programs

UpProgram

You must upload a program before program edit functions are allowed. If you wish to programming at the PC, first upload all programs from a RAM-cleared ECR.

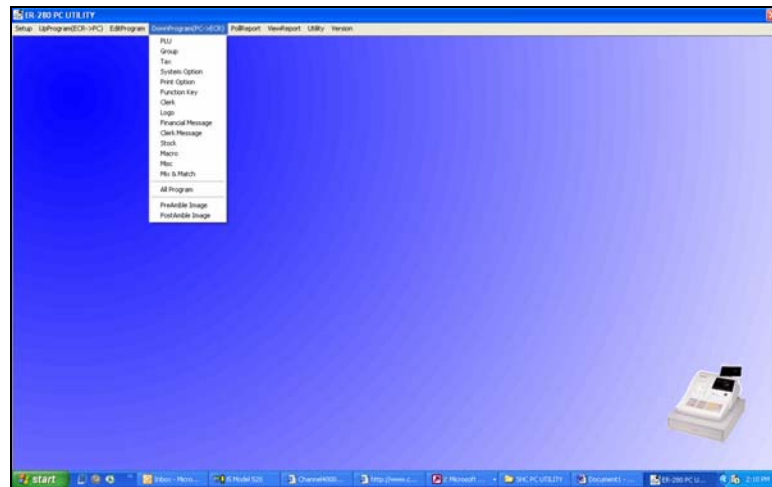
- ◆ Select the program segment you wish to upload from the **UpProgram** menu, or select **All Program** to upload the entire register program



DownProgram

Downloading a program will overwrite the existing register program.

- ◆ Select the program segment you wish to download from the **DownProgram** menu, or select **All Program** to download the entire register program (not including PreAmble and PostAmble images, that are downloaded separately.)



Edit Programs

Procedures

With the exception of memory allocation (which can be viewed, but not changed), all register programs can be edited with the PC Utility. You will find options neatly organized on dialog boxes, making register option programming on the PC Utility more efficient than programming options at the register.

NOTE: You must upload a program before program edit functions are allowed.

1. To edit a program, choose the appropriate program from the **EditProgram** menu. An example of each program dialog box is shown in this chapter.
2. After edits, click **Save** to exit and save changes, or click **Cancel** to exit without saving changes.

Tips

- Each Store's data, including both uploaded program files and polled report files, is located in a separate folder under the ER-280PC folder.
- If you are building a new register program based upon an existing store, you can copy an existing store's program files to a new store folder. It is often more efficient to modify an existing program than to start over with a new one.
- If you are building a large PLU file with identical (or similar) options for each PLU, you may find the from/to PLU programming at the register useful. For example, you can first program the identical options for a range of PLUs at the register. Then upload the PLU program with the utility. Use the utility to program descriptors, prices and make adjustments to each PLU individually. Finally, you can download the completed program to the register.
- If you have questions regarding the meaning of ECR features, refer the appropriate *ER-285M Program and Operation* manual for an explanation of your program options.

Program Edit Screens

PLU

PROGRAMMING PLU - Right click to delete an item.

CODE	DESCRIPTOR	PRICE1
1	Hamburger	5.95
2	Cheese Burger	6.45
3	Bacon CheeseBurger	6.95
4	California Burger	6.35
5	Salsa Burger	5.75
6	Salsa CheeseBurger	6.35
7	Patty Melt	5.95
8	Bacon Patty Melt	6.45
9	Double Hamburger	7.95
10	Double Ch Burger	8.45
11	DbI Bacon ChBurger	7.95
12	Hot Dog	0.95
13	Chili Dog	1.45
14	Chili Cheese Dog	1.95
15	French Fries	1.25
16	Cottage Fries	1.55
17	Hash Browns	2.15
18	Onion Rings	2.35
19	Pepsi	1.15
20	Diet Pepsi	1.15
21	Mt Dew	1.15
22	Diet Mt Dew	1.15
23	Ketchup	0.00
24	burgertime	10.00
25	pizza	0.00
26	PLU26	0.00
27	PLU27	0.00
28	PLU28	0.00
29	Gift Card Activate	0.00
30	Gift Card Add	0.00
31	PLU31	0.00
32	PLU32	0.00
33	PLU33	0.00
34	PLU34	0.00
35	PLU35	0.00

TOTAL PLU# : 56

PLU CODE: 1
 DESCRIPTOR: Hamburger
 GROUP: 1 0 0
 PRICE1: 5.95
 PRICE2: 4.95
 PRESET PRESET OVERRIDE
 TAXABLE BY: 1 2 3 4
 FOOD STAMP ELIGIBLE NEGATIVE ITEM
 HASH ITEM SINGLE ITEM
 NON ADD # COMP. GALLONAGE ITEM
 INVENTORY ITEM DISABLE
 SCALABLE AUTO SCALE
 CONDIMENT ITEM CONDIMENT COMP.
 PRINT ON RECEIPT PRINT PRICE ON RECEIPT PRINT ON CHECK
 DISABLE PROMO PRINT PRICE ON CHECK
 COUNTER NOT RESET
 PRESET OVERRIDE IN MGR MODE
 LINK PLU CODE: 0
 AUTO TARE: 0
 MIX & MATCH #: 1

Buttons: EXIT, SAVE, CANCEL

Groups

GROUP

#	DESCRIPTOR
1	Burgers
2	Hot Dogs
3	Potatos
4	Beverages
5	GROUP 5
6	GROUP 6
7	GROUP 7
8	GROUP 8
9	GROUP 9
10	GROUP 10
11	GROUP 11
12	GROUP 12
13	GROUP 13
14	GROUP 14
15	GROUP 15
16	GROUP 16
17	GROUP 17
18	GROUP 18
19	GROUP 19
20	GROUP 20
21	GROUP 21
22	GROUP 22

GROUP 1
 DESCRIPTOR: Burgers
 ADD TO GROUP TOTAL
 SEND TO KP
 KP PORT:
 PORT # 1 PORT 2
 RECEIPT PORT 3
 PRINT RED ON KP
 GIFT CARD(1-2): 0

Buttons: SAVE, CANCEL

Tax

Tax

TAX1

ADD ON TAX TABLE VAT

RATE 6.500

GST TAXTABLE

TAX 1 TAX 2 TAX 3

SAVE CANCEL

System Option

SYSTEM OPTION

BEEPER ACTIVE MCR CLERK SIGN

CLERK ENTRY CODE CLERK IS STAY DOWN

DRAWER NEED TO BE SHUT TO OPERATE

ACTIVATE DRAWER OPEN ALARM

SECONDS TO ALLOW DRAWER OPEN (1-99) 30

ALLOW POST TENDER OPEN DRAWER ON POST TENDER

ALLOW MULTIPLE RECEIPT

CASH DECLARATION REQ. BEFORE REPORTS

MGR CONTROL TO TEND NEG. BALANCE

MGR CONTROL TO TEND ZERO BALANCE

RESET TRANSACTION NO. ON Z REPORT

RESET GRAND TOTAL AFTER Z REPORT

OPEN DRAWER WHEN REPORTS ARE RUN

OPEN DRAWER DURING TRAIN MODE

DECIMAL PLACE 2

DATE FORMAT MDY

MODIFIER POP UP AFTER ITEM

PIN PAD (0-2) 0

M & M taxable

% AND TAX CAL. ROUND UP AT 0.50

SPLIT PRICE CAL. ROUND UP AT 0.50

COMP. EAT-IN T-OUT D-THRU BEFORE TENDERING

HASH IS NORMAL

RESET Z COUNTER AFTER Z1 REPORT

FINAN. RPT. TIME RPT.

PLU RPT. CLERK RPT.

GROUP RPT.

RESET Z COUNTER AFTER Z2 REPORT

DAILY SALES REPORT

PRINTER PAPER SENSOR ACTIVE

DEACTIVATE SPLIT PRICING

ALLOW DIRECT MULT

INVENTORY COUNT

COUNTER REPLACE CURR.LVL

GLOBAL ENTRY LIMIT (0-14) 0

DISABLE PRICE LEVEL KEY

LEVEL 1 LEVEL 2

PRICE LEVEL POP UP AFTER ITEM

ENABLE ELECTRONIC JOURNAL

PROMPT OPERATOR WHEN E.J BUFFER IS FULL

DISABLE CASH DECLARE

MCR USE DIGIT 0

STOP OPERATIONS WHEN E.J BUFFER IS FULL

SEND ONLY NEGATIVE ENTRIES TO E.J

SEND RESET REPORT TO E.J

DIRECT MULT MORE THAN ONE DIGIT

TENDER VALIDATION AMT OF SALE

NOT COUNT IN MEMROY IN VOID MODE

VAT SHIFT AFFECT THE WHOLE RECEIPT

CLERK INTERRUPT

DISPLAY ADD PRICE OF LINKED ITEMS

ALLOW SALE WITH 0 STOCK

ALLOW SWEDISH ROUNDING ON SUBTOTAL

ALLOW SWEDISH ROUNDING ON CASH

ALLOW Z STOCK REPORT

USE SPOOL

PERCENT NOT AFFECT TO NET SALE

USE MCR

OVERLAY DESCRIPTOR

EFT DRAFT IS DUKPT

MSR CONNECTED REGISTEF

PIN PAD TYPE DUKPT

MCR TRACK 1&2

KBD SHIFT 1-2, 3-4, 5-6..

SAVE CANCEL

Print Option

PRINT OPTION

PRINT MEDIA TOTALS ON CLERK REPORT
 PRINT TAX SYMBOL
 PRINT VOID MODE AND RETURN ON RPT.
 PRINT AUDACTION ON REPORT
 SKIP ZERO TOTALS ON FINANCIAL RPT.
 SKIP ZERO TOTALS ON CLERK REPORT
 PRINT CLERK REPORT AFTER FINAN. RPT
 PRINT SALE ITEM NO.
 PRINT PLU WITH ZERO TOTALS ON RPT
 PRINT SUBTOTAL WHEN PRESSE
 PRINT % OF SALES ON PLU REPORT
 PRINT CONS. NO.
 PRINT DATE PRINT TIME
 PRINT MACHINE NO.
 PRINT CLERK NAME
 HOME CURRENCY SYMBOL \$
 PRINT Z COUNTER
 PRINT RECEIPT WHEN SIGN ON/OFF
 PRINT GRAND TOTAL
 ON X REPORT ON Z REPORT
 PRINT GROSS TOTAL
 ON X REPORT ON Z REPORT
 COPY OF DATATRAN RECEIPT (0-99)

PRINT SUBTOTAL WITHOUT TAX
 PRINT TAX AMOUNT
 PRINT TAXABLE TOTAL
 PRINT TAX RATE
 VAT BREAKDOWN
 PRINT TRAIN MODE TITLE IN TRAINING MODE
 CURRENCY SYMBOL
 CONV # 1
 CONV # 2
 CONV # 3
 CONV # 4
 PRINT KP ORDER # ON RECEIPT
 PRINT PRICE ON KP
 SEND TO KP IN VOID MODE
 SEND TO KP IN TRAIN MODE
 COMBINE LIKE ITEMS ON KP
 CONSOLIDATION ON CHECK TRACK
 VOLUME UNIT

TAX AMOUNT IS
 PRINT PREAMBLE ON THE GUEST CHECK
 PRINT POSTAMBLE ON THE GUEST CHECK
 AVG ITEM / CUST AVG \$ / CUST
 BUFFER RECEIPT ISSUE WHEN REC IS ON
 PRIORITY PRINT BY GROUP ON KP
 PRINT PLU # ON RECEIPT
 PRE-PRN GRAPHIC LOGO ON RECEIPT
 POST-PRN GRAPHIC LOGO ON RECEIPT
 PRE-PRINTING LOGO IS DEFAULT
 POST-PRINTING LOGO IS DEFAULT
 PRE-PRN GRAPHIC LOGO ON GUEST CHECK
 POST PRN GRAPHIC LOGO ON GUEST CHECK
 NOT PRINT WHEN POLLING REPORTS
 PRINT PLU # ON PLU REPORTS
 GRAND TOTAL IS
 SEND ORDER TO KP AT SUBTOTAL
 PRINT DATE ON SERV ON HARD CHECK
 EDIT PRE FEEDING LINE (0-5)
 EDIT END FEEDING LINE (0-5)
 PRINT E.J FROM OLDEST
 FONT SIZE IS

Function Key

Function Key

Function Key

- NoSale
- % 1
- % 2
- % 3
- % 4
- % 5
- ADDCHK
- CANCEL
- ~C~A~S~H
- ~V~I~S~A
- CHARGE2
- CHARGE3
- CHARGE4
- CHARGE5
- CHARGE6
- CHARGE7
- CHARGE8
- CHKCASH
- CHKENDOR
- CHECK
- CHECK #
- CONV1
- CONV2
- CONV3
- CONV4
- Drive
- Eatin
- ERRCORR
- F/S SUB
- F/S Tend

NoSale

DESCRIPTOR 1
 DESCRIPTOR 2

KEY DISABLE PRINT ON N/S
 INHIBIT NO SALE AFTER NON-ADD #
 ENFORCE# ENTRY AT START OF SALE
 UNDER MGR CONTROL
 NON-ADD# PROHIBIT
 COMP. NON-ADD # MUST MATCH MAX DIGIT
 PRINT NON-ADD ON GUEST CHECK

MAX DIGIT (0-8)

Clerk

CLERK

#	DESCRIPTOR
1	Kelly
2	Jill
3	Huckle
4	Tina
5	Lauren
6	Rick
7	Mike
8	Bob
9	Linda
10	Marissa
11	Anna
12	Shannon
13	Katie
14	Mason
15	Albert

CLERK 1

DESCRIPTOR

CLERK CODE

TRAIN CLERK

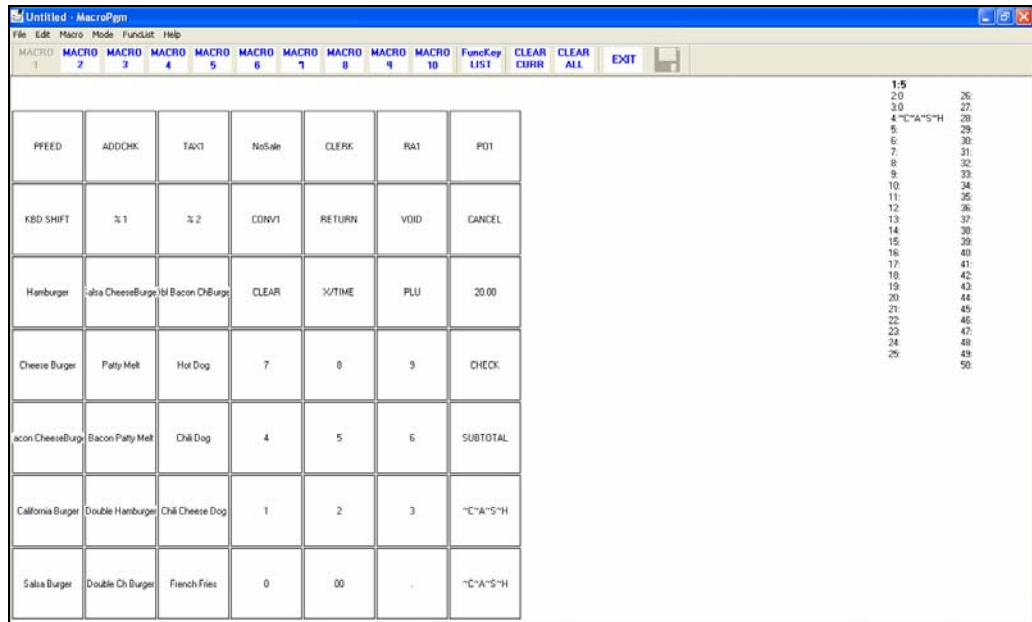
DRAWER ASSIGN (0-1)

Logo/Descriptors

LogoDesc

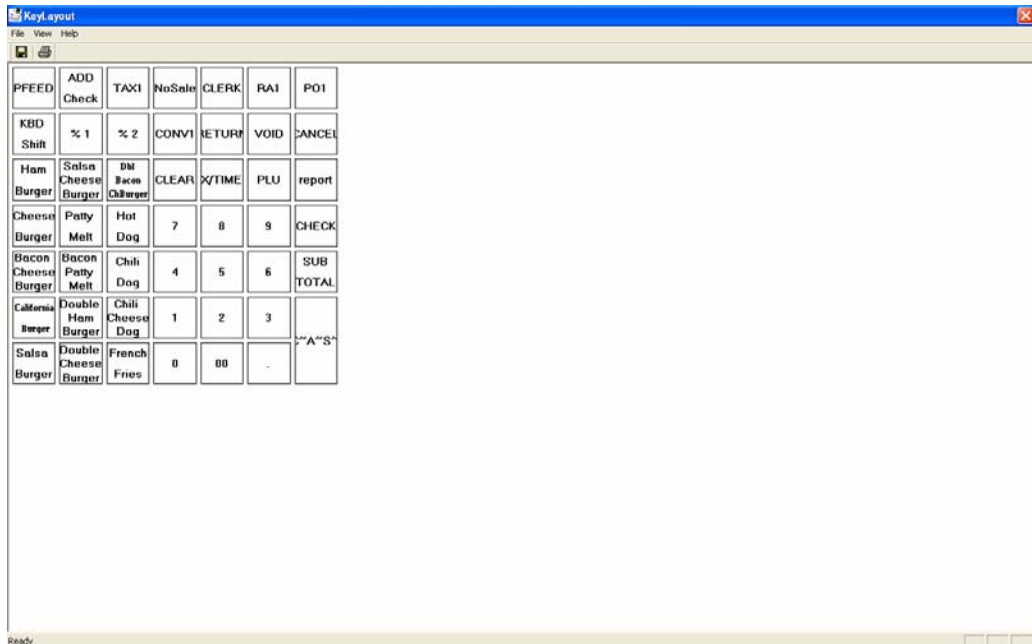
PREAMBLE	ENDORSEMENT MSG	FINANCIAL REP MSG	CLERK REP MSG
<p>Welcome to Kelly's Grill</p> <p>We Offer The Greatest B</p> <p>Ask Your Server About T</p> <p>~S~P~E~C~I~A~L~</p> <p>Tuesdays Are Kids Eat Fr</p> <p>They Must Bring Their Pa</p>	<p>Pay to the order of</p> <p>Kelly's Grill, St. Paul, MN</p> <p>Acct# 1234567890-09</p>	<p>+PLU TTL</p> <p>FINANCIAL REP. ^</p> <p>+PLU TTL</p> <p>-PLU TTL</p> <p>ADJST TTL</p> <p>NONTAX</p> <p>TAX1 SALES</p> <p>TAX2 SALES</p> <p>TAX3 SALES</p> <p>TAX4 SALES</p> <p>TAX1</p> <p>TAX2</p> <p>TAX3</p> <p>TAX4</p> <p>XMPT1 SALES</p> <p>XMPT2 SALES</p> <p>XMPT3 SALES</p> <p>XMPT4 SALES</p> <p>EATIN TTL</p> <p>TAKEOUT TTL</p> <p>DRTHRU TTL</p> <p>% 1</p> <p>% 2</p> <p>% 3</p> <p>% 4</p> <p>% 5</p> <p>NET SALE</p> <p>CREDIT TAX1</p>	<p>NET SALE</p> <p>CLERK REP. ^</p> <p>NET SALE</p> <p>NONTAX</p> <p>TAX1 SALES</p> <p>TAX2 SALES</p> <p>TAX3 SALES</p> <p>TAX4 SALES</p> <p>TAX1</p> <p>TAX2</p> <p>TAX3</p> <p>TAX4</p> <p>XMPT1 SALES</p> <p>XMPT2 SALES</p> <p>XMPT3 SALES</p> <p>XMPT4 SALES</p> <p>EATIN TTL</p> <p>TAKEOUT TTL</p> <p>DRTHRU TTL</p> <p>% 1</p> <p>% 2</p> <p>% 3</p> <p>% 4</p> <p>% 5</p> <p>CREDIT TAX1</p> <p>CREDIT TAX2</p> <p>CREDIT TAX3</p> <p>CREDIT TAX4</p>
<p>POSTAMBLE</p> <p>Thank-You For Choosing</p> <p>If You Enjoyed Your Me</p> <p>Tell Your Friends.</p> <p>If You Did Not, Please Te</p> <p>123 Kelly Way, St. Paul,</p> <p>1-800-333-4949</p>	<p>DATATRAN MSG</p> <p>~K~e~l~l~y~'~s~ ~G~r~i~l~</p> <p>St. Paul, MN 55110</p> <p>Please Come Again!!!</p>		

Macro



Key Layout

Note: To see the entire keyboard on the screen, the screen resolution must be set to 1024 x 768 pixels.



Comm Port

CommPort

PORT 1

BAUDRATE	9600	PARITY	NONE
DATA BITS	8 BIT	STOP BIT	1 BIT
SCALE TYPE	NCI	POLE DISPLAY TYPE	EPSON
DEVICE FUNCTION	PC	PRINTER TYPE	NONE
INITIAL FEEDING LINE (0-20)	0	ENDING FEEDING LINE (0-20)	7
INITIAL FEEDING LINE ON SLIP (0-20)	0	PRINT LINE ON GUEST CHECK (0-50)	0

SAVE CANCEL

Mix & Match

MIX&MATCH

#	DESCRIPTOR
1	Kelly's Discount
2	Dennis's DIS
3	DISCOUNT 3
4	DISCOUNT 4
5	DISCOUNT 5
6	DISCOUNT 6
7	DISCOUNT 7
8	DISCOUNT 8
9	DISCOUNT 9
10	DISCOUNT 10
11	DISCOUNT 11
12	DISCOUNT 12
13	DISCOUNT 13
14	DISCOUNT 14
15	DISCOUNT 15
16	DISCOUNT 16
17	DISCOUNT 17
18	DISCOUNT 18
19	DISCOUNT 19
20	DISCOUNT 20

DISCOUNT 1

DESCRIPTOR Kelly's Discount

TRIP LEVEL 3

PRICE 6.00

OK Cancel

Etc. – Tare/Drawer Limit/Change Limit/Machine Number

The 'Etc' dialog box contains the following fields and controls:

- TARE WEIGHT:** A group box containing five text input fields, each with the value '0.000'.
- DRAWER LIMIT:** A text input field with the value '0.00'.
- CHECK CHANGE LIMIT:** A text input field with the value '0.00'.
- MACHINE NUMBER:** A text input field with the value '0'.
- Buttons:** 'SAVE' and 'CANCEL' buttons at the bottom.

Memory Allocation

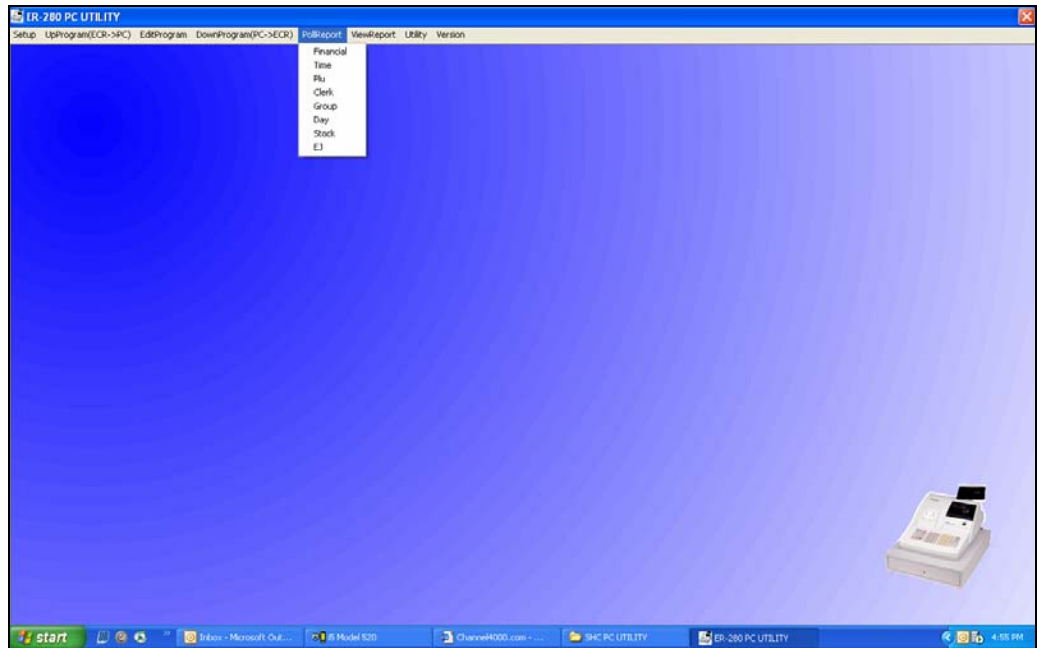
The 'Memall' dialog box contains the following fields and controls:

- MEMORY SIZE:** Text input field with value '928576'.
- # OF PLU:** Text input field with value '2000'.
- PLU PRICE LEVEL:** Text input field with value '2'.
- # OF CLERK:** Text input field with value '10'.
- # OF GROUP:** Text input field with value '20'.
- # OF CHECK:** Text input field with value '15'.
- # OF SOFT CHECK:** Text input field with value '30'.
- CHECK TYPE:** Dropdown menu with 'SOFT' selected.
- MIX & MATCH:** Text input field with value '10'.
- EJ LINES:** Text input field with value '5000'.
- Button:** 'OK' button at the bottom.

Reports

Poll Reports

- ◆ Select the report you wish to poll from the **PollReport** menu.



Report File Conventions

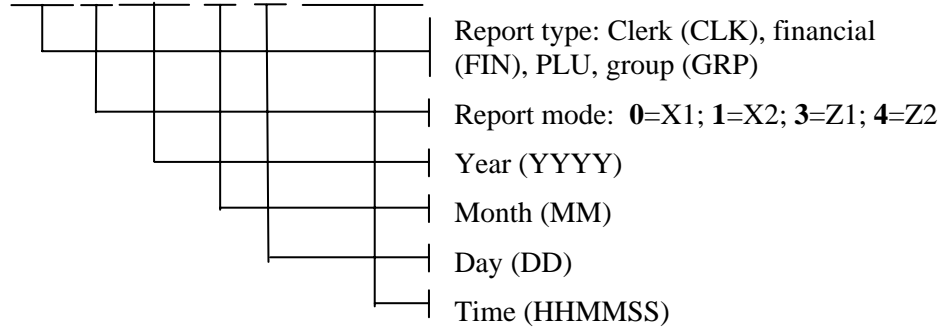
Polled reports are stored in a folder named with the current date, located in a folder under the store name. For example:

C:\ER-280PC\Storename\041207

Where 041207 is the date the reports were polled, April 12, 2007.

Reports listed in this folder are named using the following convention:

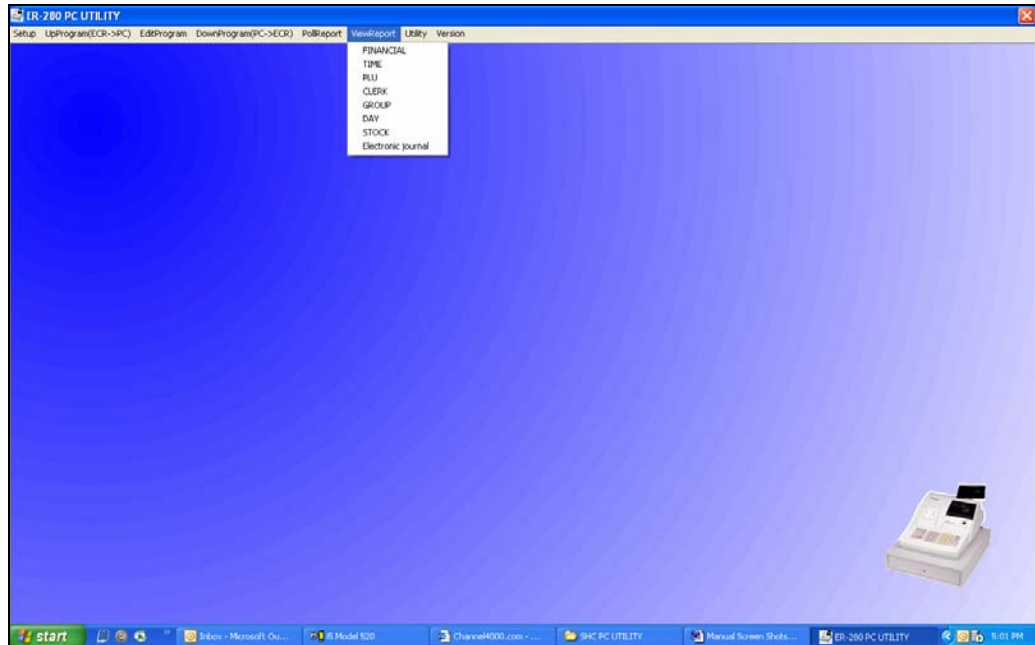
CLK020070412113449.rep



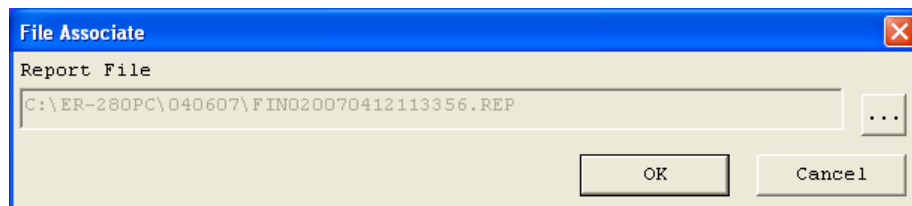
View Reports

SAM4s ER-280 series reports are saved in .RPT format. These files are not ASCII and cannot be directly read by a report editor. However, with this utility, you can view the report data, export it to Microsoft Excel, and/or export it to a text file.

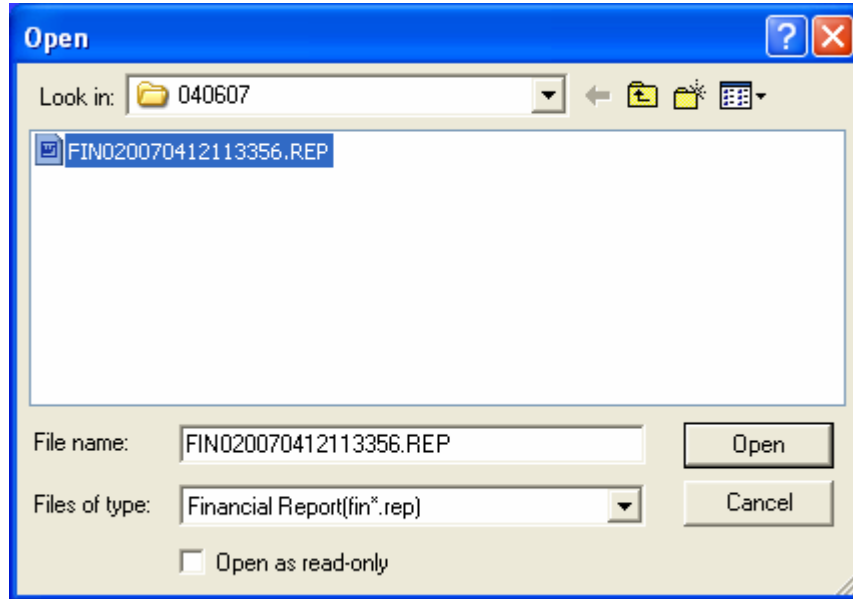
1. Select the type of report you wish to view from the ViewReport menu.



2. The File Associate dialog displays. Click the Browse (...) button to locate the report you wish to view.



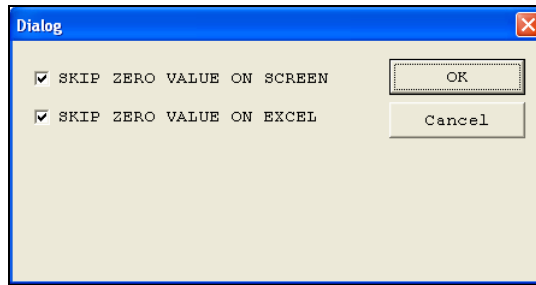
- Select the report you wish to view. Note that report you select must match the type of report you selected from the menu. For example, if you selected PLU from the ViewReport menu, you must select a report file that begins with the text “PLU ...”; if you selected FINANCIAL from the ViewReport menu, you must select a report file that begins with the text “FIN...”



- Click **Open**. The selected report displays.

DESCRIPTOR	COUNT	TOTAL
+PLU TTL	63.00	352.91
-PLU TTL	3.00	-23.97
ADJST TTL	66.00	328.94
NONTAX	3	-23.97
TAX1 SALES	0	350.97
TAX2 SALES	0	29.75
TAX3 SALES	0	29.75
TAX4 SALES	0	29.75
TAX1	0	21.05
TAX2	0	0.30
TAX3	0	0.60
TAX4	0	0.90
% 1	1	-1.94
NET SALE	8	349.85
CREDIT TAX2	1	-0.06
CREDIT TAX3	1	-0.12
CREDIT TAX4	1	-0.18
RETURN	1	-5.95
PREVIOUS VD	1	-5.95
VOID MODE	-1	-6.67
CANCEL	1	5.95
GROSS SALES	0	388.74
CASH SALES	7	316.03
CHECK SALES	1	33.82

5. Choose **Setting** to select zero skip options. Click **OK** to close the dialog and return to the financial report window.



6. From the report window, choose:

Print: to print the file at your printer

Export to Excel: to save the report in text (.xls) format

View on Excel: to open Excel and view the file

Export to Text: to save the report in Excel (.txt) format

File Associate: to select a new financial report

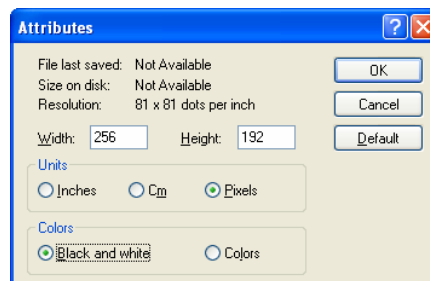
Close: to exit

Prepare & Load Bitmap Logos

Preparing a Graphic Logo Bitmap for an ER-285M

The image must be black/white, 256 x 192 pixels, and 10 Kbytes or less in size.

1. Open MS Paint.
2. Open the image file you wish to use.
3. Choose **Attributes** from the **Image** menu. The **Attributes** dialog box displays.



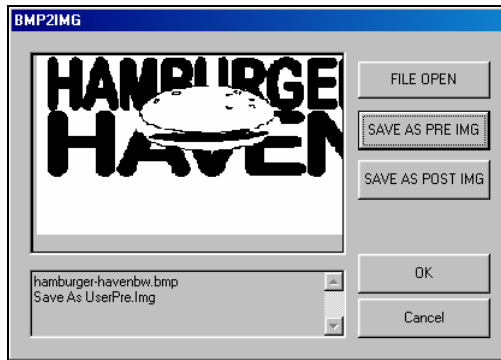
4. The image dimensions must be no larger than 256 pixels wide by 192 pixels high. If the image size in pixels is greater than the maximum, you must resize your image.
 - a. Click **OK** to exit the Attributes dialog.
 - b. Select your image. (Choose **Select All** from the **Edit** menu.)
 - c. Using the handles of the selected image, resize the image. Keep the image in the upper left corner of the screen.
 - d. Choose **Attributes** from the **Image** menu. The **Attributes** dialog box displays again. Enter 256 in the **Width** field; enter 192 in the **Height** field; select **Pixels** as the unit. Click **OK** to exit the dialog box.
 - e. Your image will be cropped to the 256 x 192 pixel size. If you cropped part of the image you wish to keep, you can undo (Ctrl + Z)

and try again. You may have to experiment a bit to resize the image inside the 256 x 192 pixel limit.

5. After the image is sized, select **Black and white** in the **Attributes** dialog.
6. Save your image as type “Monochrome Bitmap (*.bmp,*.dib)” and confirm that the size is 10k or less. If you resized your original image, you may wish to rename when you save, so that you preserve a copy of the original image.

Download a Graphic Logo to an ER-285M

1. Install the *ER-280 PC Utility* on your PC.
2. At the ER-285M, set the RS-232C option address #5 to a value of 1 (PC).
(S position; 80 SBTL; 5 X/TIME; 1 CASH; CASH, or
S position; 81 SBTL; 5 X/TIME; 1 CASH; CASH, or
S position; 82 SBTL; 5 X/TIME; 1 CASH; CASH)
3. Return key lock to **REG** and sign on a clerk.
4. Connect the PC to the ER-285M using one of the following cables:
CRS Part # 522035 (Register DB-9M to PC DB-9F)
CRS Part # 522038 (Register DB-9M to PC DB-25F)
CRS Part # 522036 (For port #3 Register RJ45 to PC DB-9F)
5. At your PC, start the ER-280 PC Utility. (Select **Start, Programs, SHC PC UTILITY, ER-280 PC UTILITY.**) The **Store Setting** dialog box displays.
6. If you are starting the ER-280 PC Utility for the first time, you must define a store name, or if a store is already defined, you can select the store from the drop down list. After the store is defined or selected, click **Close**. The PC Utility program starts.
7. Move the .bmp logos you wish to use into the store directory (i.e. C:/ER-280PC/storename.)
8. At the PC Utility, choose **Convert Logo Image** from the **Utility** menu. The Bmp dialog box displays.
9. Click **FILE OPEN**. Select the bitmap image you wish to use from the **Open** dialog and click the **Open** command button.
10. Click the **SAVE AS PRE IMG** or **SAVE AS POST IMG** button.



11. When the image is selected, click **OK**. Verify that the message “Save As UserPre.Img” or “Save As UserPost.Img” displays. If the file is too large, and cannot be loaded, the message “File Size Error” display.
12. Choose **PreAmble Image** or **PostAmble Image** from the **DownProgram** menu.
13. The screen will track the progress of the download. When complete, the **COMPLETED** message will display, click **OK**.

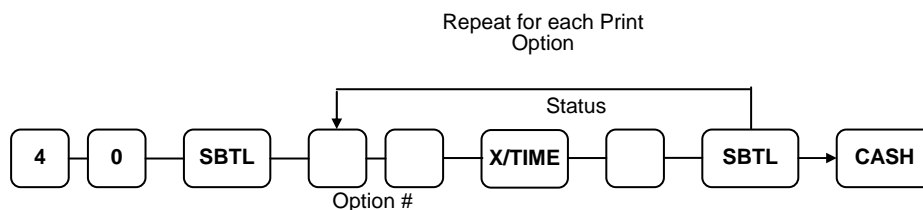
Printing the Logo Image – ER-285M Settings

Two addresses in Print Option Programming affect graphic logo printing:

Option #28 – Add the value of 1 to address 28 if you wish to print the pre graphic logo on the receipt. Add the value of 2 to address 28 if you wish to print the post graphic logo on the receipt.

Option #30 – Add the value of 1 to address 30 if you wish to print your custom bitmap instead of the default bitmap “Thank You – Your Receipt”.

Print Option Flowchart (P Key Lock Position)



Appendix

Cabling Diagrams

You can configure cables yourself with the diagram provided here, or you can order the appropriate cables from CRS Parts at 1-800-333-4949.

Direct Connection

Part # 522035

Sam4s DB-9M	PC DB-9F
DCD1	1DCD
RXD2	2RXD
TXD3	3TXD
DTR4	4DTR
GND5	5GND
DSR6	6DSR
RTS7	7RTS
CTS8	8CTS
VCC9	9RI

Part # 522038

Sam4s DB-9M	PC DB-25F
DCD1	1ChGND
RXD2	2TXD
TXD3	3RXD
DTR4	4RTS
GND5	5CTS
DSR6	6DSR
RTS7	7GND
CTS8	8DCD
VCC9	20DTR

Part # 522032

SAM4s Modular RJ-45	PC DB-9F
NC1	1DCD
DSR2	2RXD
TXD3	3TXD
RXD4	4DTR
RTS5	5GND
CTS6	6DSR
GND7	7RTS
DTR8	8CTS
	9RI.

Modem Communication

Use P/N 250057 for PC to Modem and Modem to ECR connections. The recommended US Robotics Modem is also available from CRS, P/N 110175.

Part # 250057

SAM4s DB-9M Port 1	MODEM DB-25M
DCD1	1ChGND
RXD2	2TXD
TXD3	3RXD
DTR4	4RTS
GND5	5CTS
DSR6	6DSR
RTS7	7GND
CTS8	8DCD
VCC9	20DTR